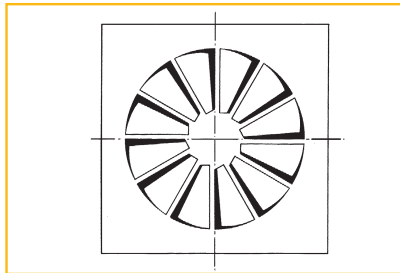
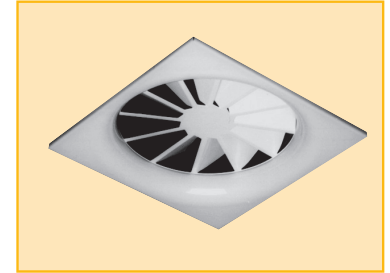
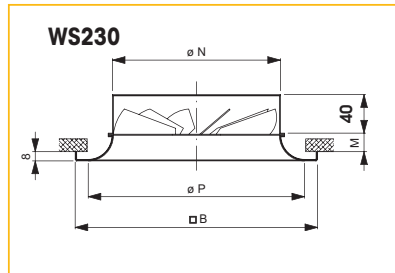
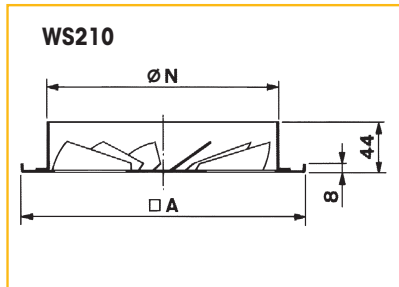


# SQUARE SWIRL DIFFUSER

## TYPE: WS200 Series

### Installation dimensions



Size	ØN	□ A	□ B	M	ØP
100	98	138	158	12	120
125	123	178	198	17	180
160	158	198	248	17	190
200	198	248	248	17	230
250	248	298	298	17	280
315	313	398	398	27	350
400	398	594	598	52	570
500	498	700	700	52	620

Ø P = min. ceiling opening.  
All dimensions in mm.

### Application

The swirl diffuser type WS200 is used for the supply of cooled and heated air in facilities such as offices, shopping centres, schools, ...

Diffuser for ceiling or exposed duct mounting. The diffuser is equipped with fixed vanes in a square frontsheet. A high induction is obtained by the exceptional swirl discharge, which makes them very suitable for VAV application from 100 % down to 25 %.

A downwards inclined swirl is obtained in the flush version WS200, when fitted with the diffusion collar WS220, a horizontal swirl is obtained.

### Technical information

#### Characteristics:

- 2,4 < installation height < 4 m
- diffuser with central screw fixing that can be disconnected from plenum or transition piece.
- diffuser without central screw, fixed to plenum or transition piece.

#### Construction:

- diffuser; steel, painted white (RAL9010)
- optional insulated plenum; galvanised steel sheet

# SQUARE SWIRL DIFFUSER

## TYPE: WS200 Series

### Specifications description

**Example:**

Square steel swirl diffuser with fixed vanes in a square frontsheet and diffusion collar. Complete with mounted plenum with side entry and damper. The diffuser is painted white (RAL 9010)

**Type:** WS231S  
size ... mm

### Accessories

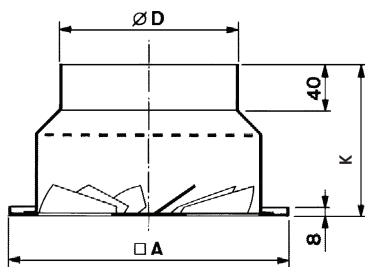
**GR003:** mounting support for central screw fixing; only for WS210/WS230

### Options

- **WS200:** Flat swirl diffuser
- **WS200S:** Flat swirl diffuser and plenum with side entry
- **WS200T:** Flat swirl diffuser with transition piece, top entry
- **WS210:** Flat swirl diffuser with central screw fixing
- **WS210T:** Flat swirl diffuser with central screw fixing and transition piece, top entry
- **WS210S:** Flat swirl diffuser with central screw fixing and plenum with side entry
- **WS211S:** Flat swirl diffuser with central screw fixing, plenum with side entry and damper in inlet spigot
- **WS220:** Swirl diffuser with diffusion collar
- **WS220S:** Swirl diffuser with diffusion collar and plenum with side entry
- **WS220T:** Swirl diffuser with diffusion collar and transition piece, top entry
- **WS230:** Swirl diffuser with diffusion collar and central screw fixing
- **WS230T:** Swirl diffuser with diffusion collar, with central screw fixing and transition piece, top entry
- **WS230S:** Swirl diffuser with diffusion collar, central screw fixing and plenum with side entry
- **WS231S:** Swirl diffuser with diffusion collar, central screw fixing and damper in inlet spigot

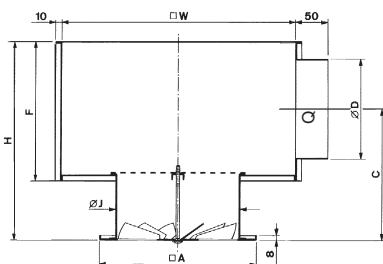
### Installation dimensions

**WS210T**

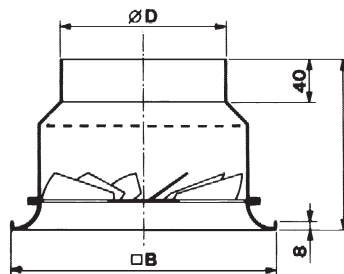


Size	C	∅ D	E	F	G	H	∅ J	□ W	K	Q
100	172	78	195	140	250	235	102	200	120	135
125	192	98	217	160	280	255	127	275	126	155
160	205	123	230	185	305	280	162	325	131	160
200	223	158	248	220	340	315	202	375	131	165
250	253	198	278	260	390	365	252	450	136	165
315	264	248	299	310	440	405	317	500	144	185
400	236	313	351	375	530	470	402	600	177	240
500	278	398	404	460	615	555	502	800	-	-

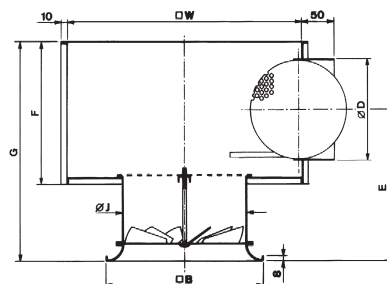
**WS210S**



**WS230T**



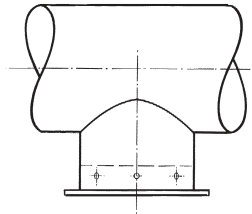
**WS231S**



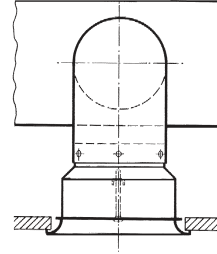
# SQUARE SWIRL DIFFUSER

## TYPE: WS200

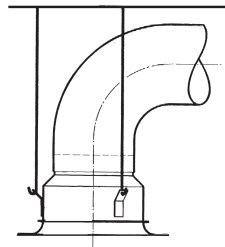
### Options



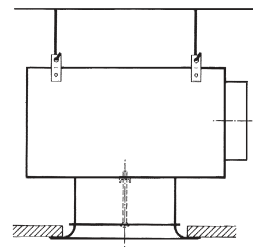
Direct mounting



Mounting with transition piece, top entry



Mounting with transition piece, top entry



Mounting with plenum box with side entry

### How to order

WR210 size 200 mm with non insulated plenum with side entry, without damper.

W	R	2	1	0	S	-	0	2	0	0	0	0	0	0
---	---	---	---	---	---	---	---	---	---	---	---	---	---	---

size

- : non insulated plenum  
G: insulated plenum (only with side entry)

- : diffuser only  
S: plenum with side entry  
T: transition piece, top entry

0: without damper  
1: with damper in inlet spigot

0: flat  
1: flat with central screw fixing  
2: with diffusion collar  
3: with diffusion collar and central screw fixing

R: circular swirl diffuser  
S: square swirl diffuser