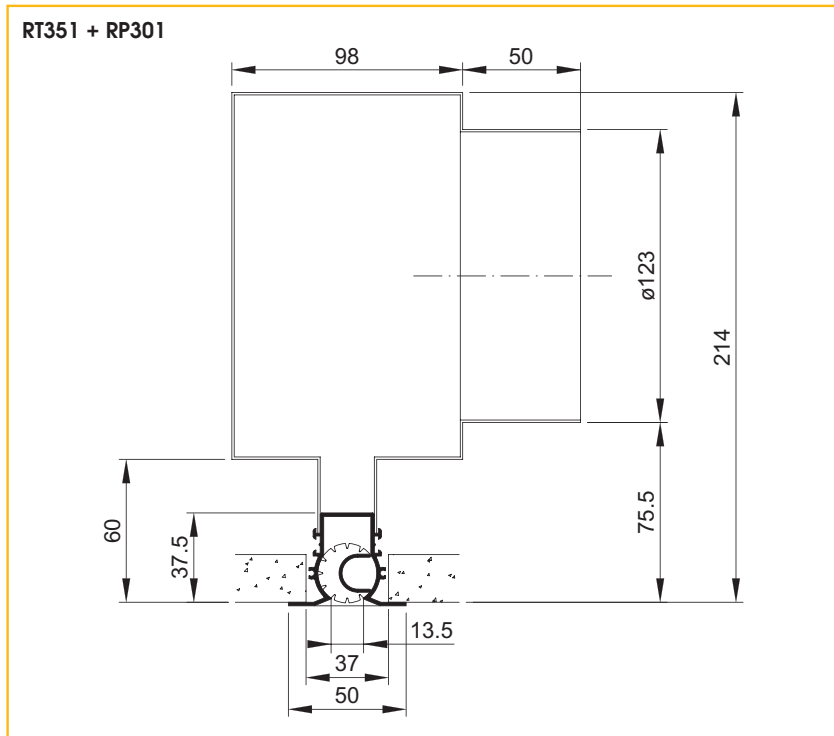


# DRUM SLOT DIFFUSER

## TYPE: RT350

### Installation dimensions



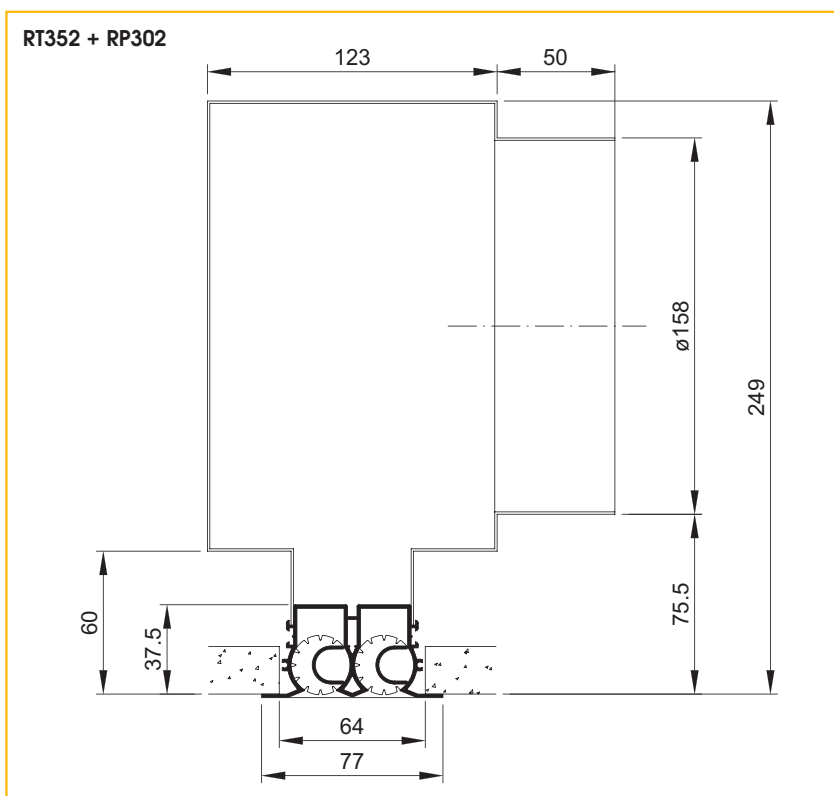
### Application

The RT350 drum slot diffuser is suitable for the supply and exhaust of cooled and warmed air in offices, shops, meeting rooms, etc. The diffuser is designed for ceiling mounting and is available with 1 or 2 slots. Each slot is fitted with air direction elements which can be individually adjusted. These specially developed air direction elements (drums) ensure an ideal and stable air diffusion pattern as well as a low noise level. There is a high level of induction and air stream penetration in the room without any internal turbulence. As a result, the drum slot diffuser is suitable for HVAC applications. All lengths are available for an ideal fit in any ceiling.

### Technical information

#### Characteristics:

- 35 mm wide front diffuser with 1 or 2 air slots, available with standard profile (total width 50 mm) or with narrow profile (total width 35 mm)
- all lengths available (in 1 mm steps): from 300 mm up to 2000 mm in 1 piece, larger lengths in centrepieces (length = 1500 mm) and endpieces which are joined together using connecting pipes
- non-working parts or dummy diffusers with blanked off back: without air nozzles
- supply: one-sided horizontal, two sided horizontal and alternating exhaust pattern possible with the adjustable air nozzles which can be set either in the factory or on site simply by turning



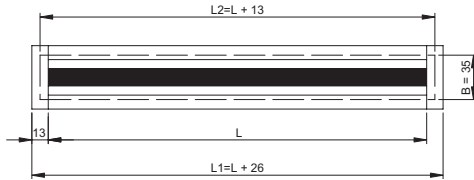
All dimensions in mm

# DRUM SLOT DIFFUSER

## TYPE: RT350

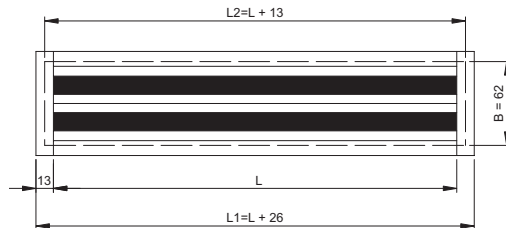
### RT351

L = slot length (mm), L<sub>2</sub> and B = ceiling opening

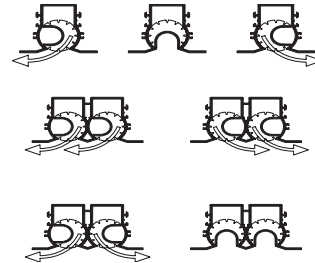


### RT352

L = slot length (mm), L<sub>2</sub> and B = ceiling opening



### Adjustment possibilities



- alternating horizontally: every 2 air nozzles
- alternating swirl: alternates at every air nozzle
- length of air nozzle = 150 mm
- 2.6 m < installation height < 4 m
- available with plenum:
  - with or without volume control valve in the inlet, adjustable at the front diffuser
  - up to a length of 1600 mm fitted with one round inlet, over 1600 mm two round inlets
  - optional internal insulation

### Construction:

- extruded aluminium, natural tone anodised or painted in a RAL colour
- fitted with black or white ABS plastic air nozzles
- galvanised steel sheet plenum, optional insulation

## How to order

RT351 with one slot, painted in a RAL-colour, slot length = 1500 mm

R	T	3	5	1	-	F	1	5	0	0	-	-	-	-
---	---	---	---	---	---	---	---	---	---	---	---	---	---	---

- slot length (mm)
- : anodised aluminium
- F: painted in a RAL-colour
- slot diffuser in one piece with end caps on both sides
- E: end pieces, with one end cap
- M: intermediate piece, without end caps
- 351: ceiling opening 35 mm, total width 50 mm, 1 slot
- 352: ceiling opening 62 mm, total width 77 mm, 2 slots
- 361: ceiling opening 35 mm, total width 35 mm, end cap X, 1 slot
- 371: ceiling opening 35 mm, total width 35 mm, end cap Z, 1 slot
- 451: ceiling opening 35 mm, total width 50 mm, 1 slot, with concealed fixing
- 452: ceiling opening 62 mm, total width 77 mm, 2 slots, with concealed fixing
- 311: dummy diffuser (for R-351), with brackets
- 312: dummy diffuser (for R-352), with brackets
- 321: dummy diffuser (for R-361), with brackets
- 331: dummy diffuser (for R-371), with brackets
- 411: dummy diffuser (for R-451), with concealed screw fixing
- 412: dummy diffuser (for R-452), with concealed screw fixing
- T: supply (black air direction elements)
- W: supply (white air direction elements)
- A: exhaust (without air direction elements)

## Specifications description

### Example:

Aluminium line diffuser with 1 outlet slot with adjustable air nozzles. Suitable for ceiling mounting. Delivered complete with fixed plenum with round side connection and volume control valve. Diffuser natural tone anodised with black plastic air nozzles. The plenum is made from galvanised steel sheet.

**Type:** RT351 + RP311  
L = ... mm

## Fixing

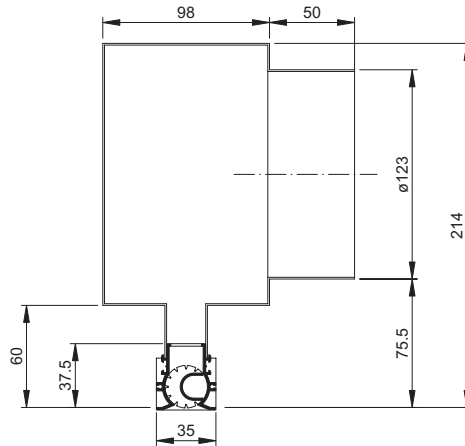
- either by a diffuser attached directly to the plenum, either by concealed fixing so that the diffuser can be removed from the plenum (mounting by Grada upon request)

# DRUM SLOT DIFFUSER

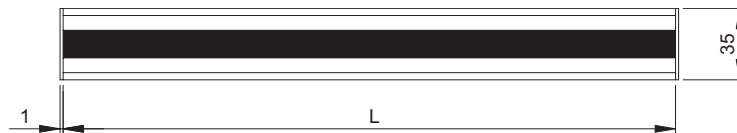
**TYPE: RT361 • RT362 • RT371 • RT372**

## Installation dimensions

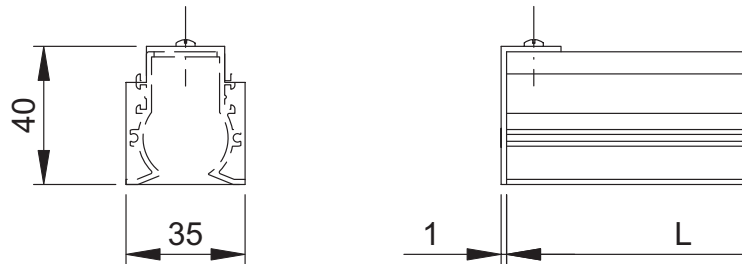
RT361/RT371 + RP301



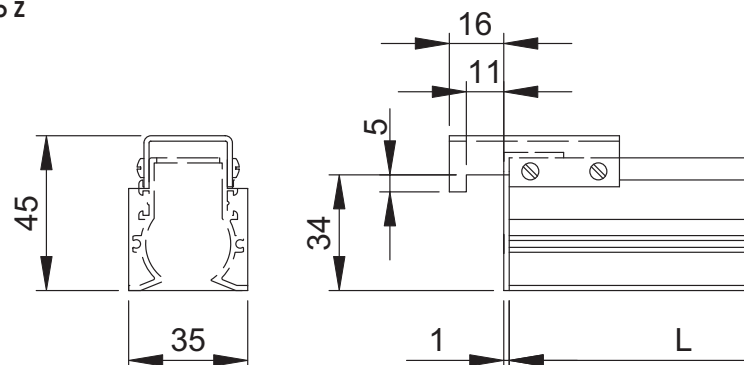
RT361/RT371  
L = slot length (mm)



RT361 - end cap X



RT371 - end cap Z



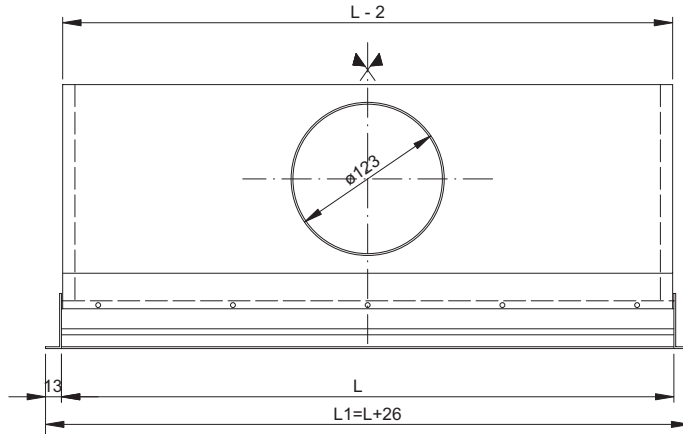
# DRUM SLOT DIFFUSER

TYPE: RT351 • 361 • 371

## Installation dimensions

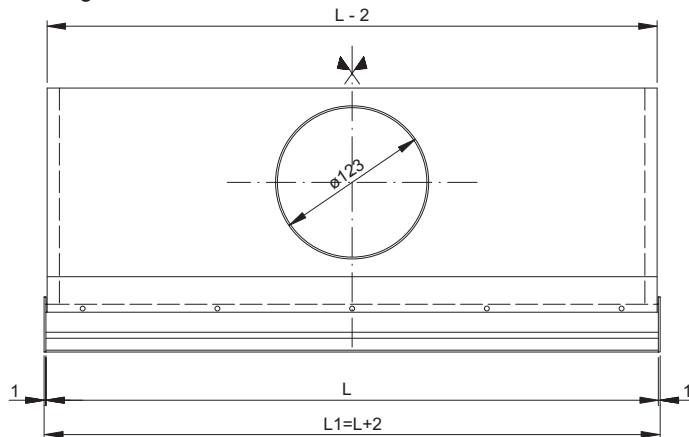
RT351 + RP301

L = slot length (mm)

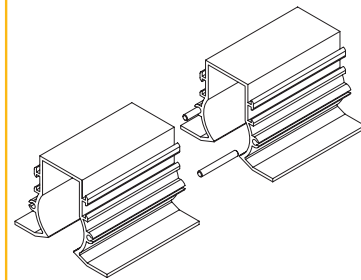


RT361 + RP301

L = slot length (mm)

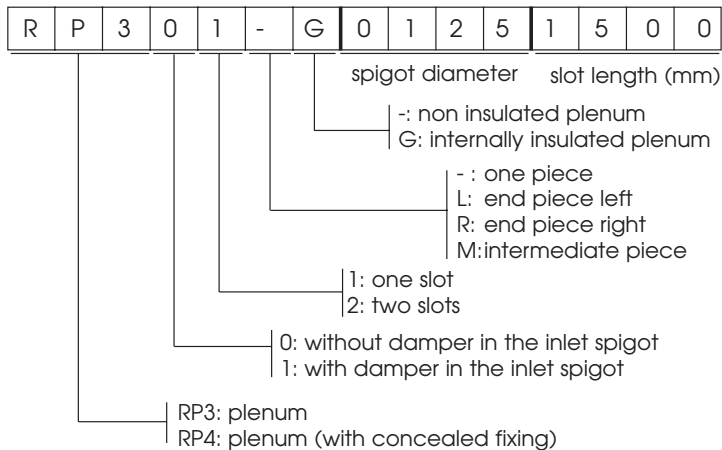


## Connection linear grilles



## How to order

RP301, insulated plenum, slot length = 1500 mm

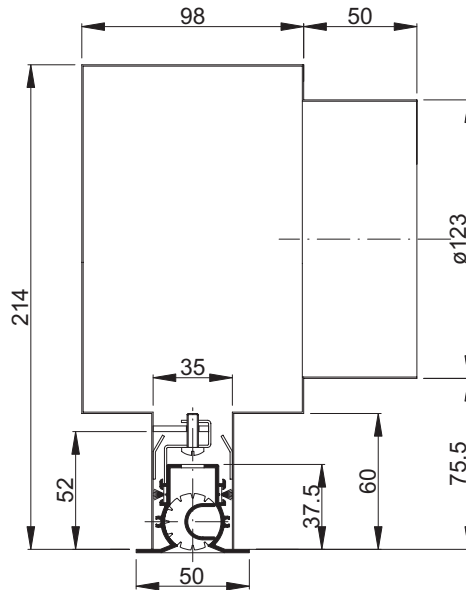


# DRUM SLOT DIFFUSER

TYPE: RT361 • 372

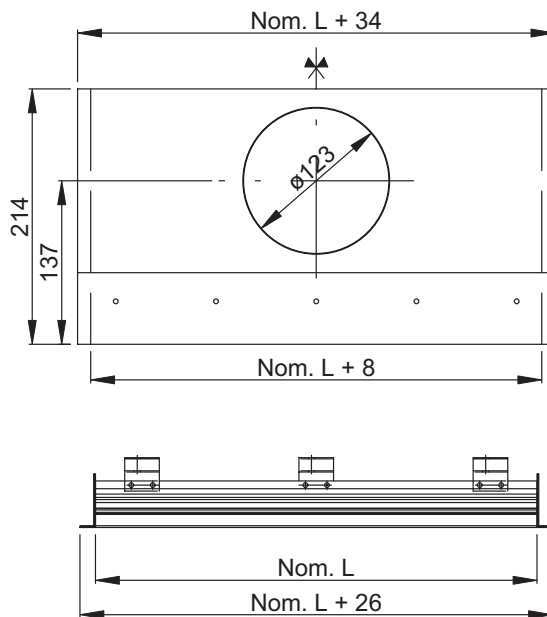
## Installation dimensions

RT451 + RP401



RT451 + RP401

L = slot length (mm)



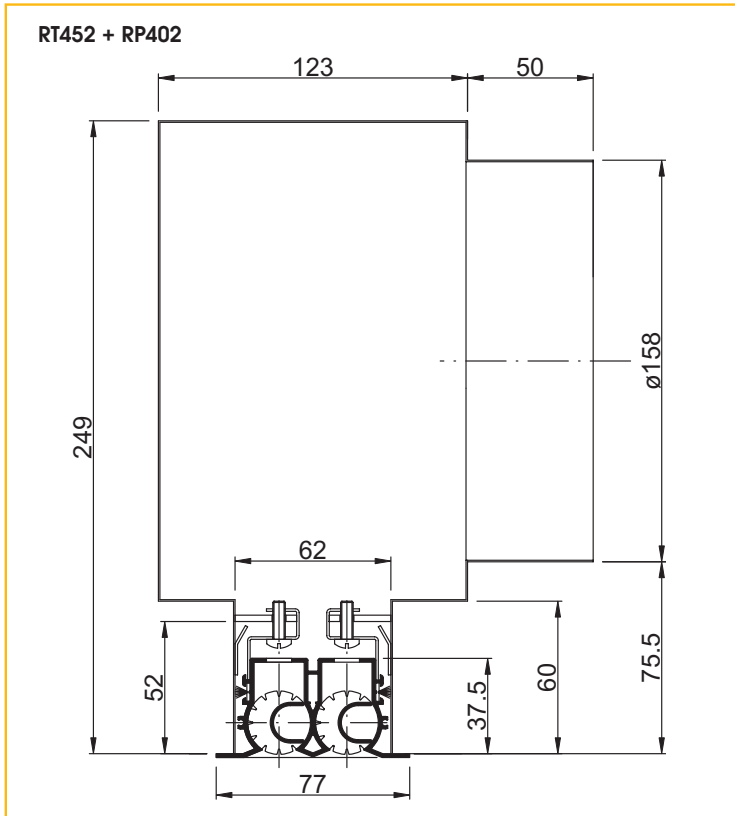
Linear execution:

end pieces + 15 mm  
intermediate pieces  
= nominal dimension

# DRUM SLOT DIFFUSER

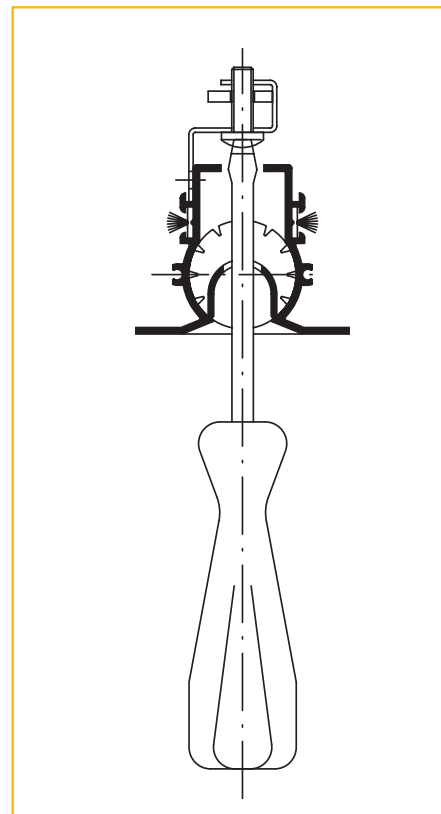
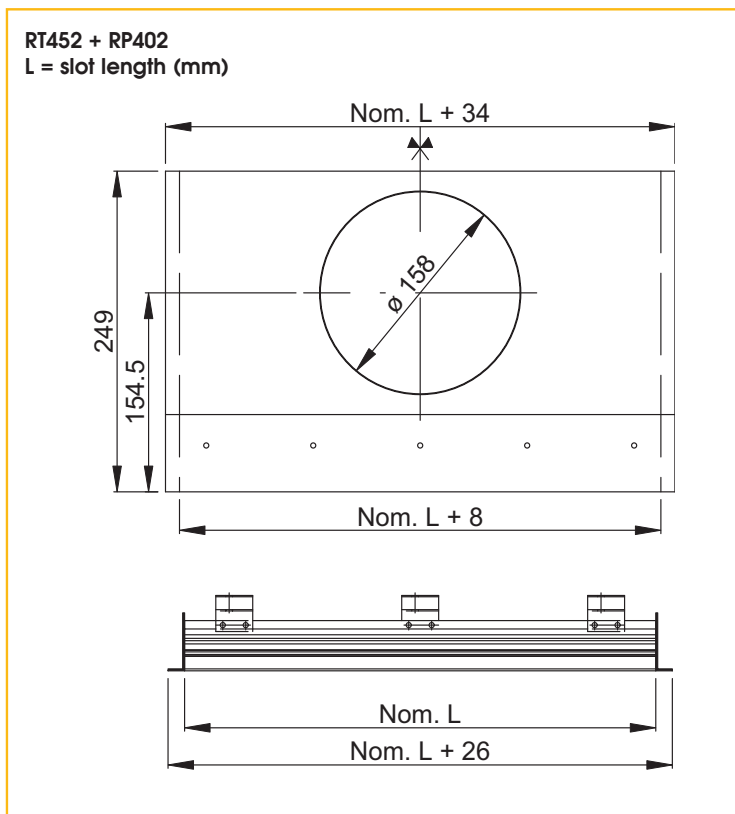
**TYPE: RT361 • 372**

## Installation dimensions



Linear execution:

end pieces + 15 mm  
intermediate pieces =  
nominal dimension



## DRUM SLOT DIFFUSER

TYPE: RT351 • RT352 • RT451 • RT452

### 13.5MM ONE SLOT

NUMBER OF SLOT DIFF	VOL PER MTR L/S	OUTLET VEL	THROW	PA	NR
1 SLOT	16	2.81	1.7	9.5	15.0
1 SLOT	24	4.21	2.6	21.3	20.0
1 SLOT	28	4.91	3.1	29.0	25.0
1 SLOT	34	5.96	3.7	42.7	30.0
1 SLOT	38	6.67	4.2	53.3	35.0
1 SLOT	44	7.72	4.8	71.5	40.0

### 13.5MM TWO SLOT

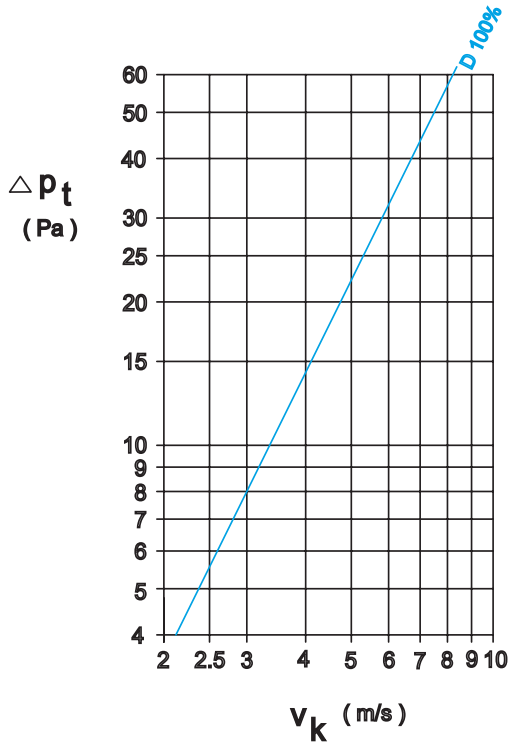
NUMBER OF SLOT DIFF	VOL PER MTR L/S	OUTLET VEL	THROW	PA	NR
2 SLOT	34	2.98	2.6	8.9	15.0
2 SLOT	40	3.51	3.1	12.3	20.0
2 SLOT	45	3.95	3.5	15.6	25.0
2 SLOT	55	4.82	4.2	23.3	30.0
2 SLOT	62	5.44	4.8	29.6	35.0
2 SLOT	70	6.14	5.4	37.7	40.0

# DRUM SLOT DIFFUSER

## TYPE: RT351

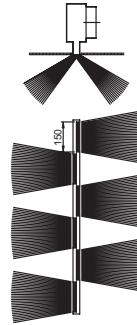
### Pressure loss - supply

With damper completely open



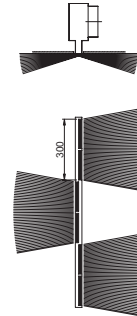
Alternating exhaust pattern

#### Alternating swirl



Correction factor on selection diagram:  $L_T \times 0,6$

#### Alternating horizontal



Correction factor on selection diagram:  $L_T \times 0,7$

### Correction factors

For linear slot diffusers

Slot length (m)	Throw correction	Noise rating correction (NR)
1 - 1,5	$L_T \times 1,00$	+0 NR
1,5 - 2	$L_T \times 1,05$	+2 NR
2 - 6,5	$L_T \times 1,1$	+5 NR