

DIFFUSERS FOR FALSE CEILINGS

WT100 • WT120



- Diffuser with 1 or 2 rows of adjustable deflector plates, resulting in an unlimited number of arrangements and an excellent swirl effect (RAL9010)
- Construction with side and top entry possible
- Can be used as exhaust grille (= WA100P)
- Dimensions and selection, see p. 3 010
- WT100/WT120 : diffuser size 250/594mm or 250/619 mm
WT100P/WT120P : diffuser up to and including size 200 mm, integrated in a false ceiling plate 594 x 594 mm
- plenum to be ordered separately

WS200 • WS220



- Square swirl diffuser with fixed vanes (RAL 9010)
- Dimensions and selection, see p. 3 040
- WS200/WS220 : diffuser size 400 mm with ceiling plate size 594x594 mm
WS200P/WS220P : diffuser up to and including size 315 mm, integrated in a false ceiling plate 594 x 594 mm
- plenum to be ordered separately

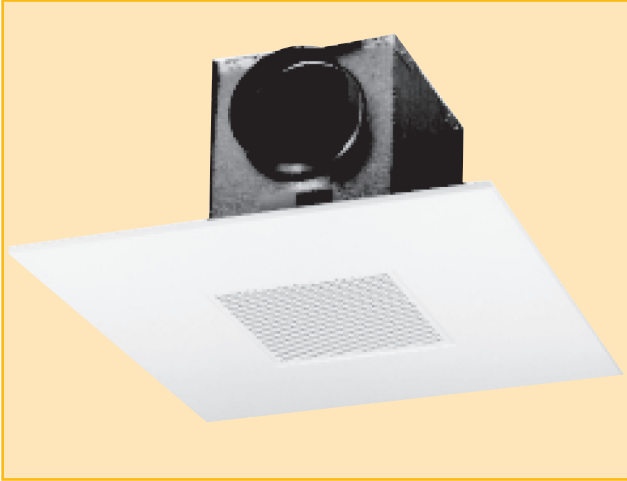
CE100P • DE100P



- Circular diffuser with adjustable air pattern
- Removable core with 2 inner cones, adjustable in 5 positions
- Damper as possible accessory
- Dimensions and selection, see p. 2 010
- CE100P : aluminium / DE100P : steel diffuser up to and including size 315 mm, integrated in a false ceiling plate 594 x 594 mm, painted white (RAL 9010)

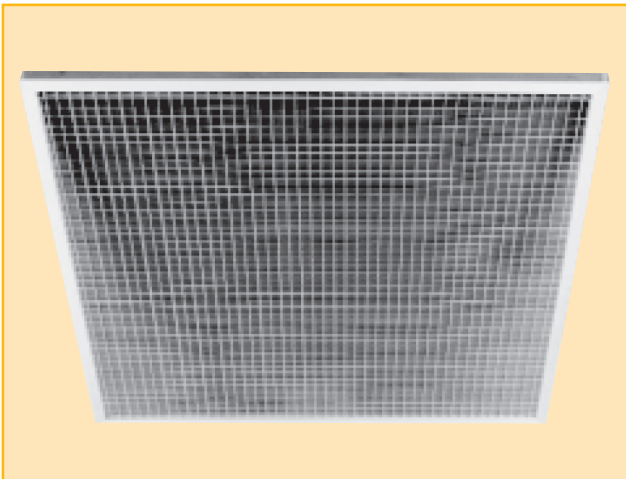
DIFFUSERS FOR FALSE CEILINGS

DA360 P



- Diffuser with deflector plates, resulting in a 1, 2, 3, or 4-way air pattern
- Construction in perforated steel sheet (RAL 9010)
- Can also be used as exhaust diffuser (= DA370P)
- Damper as possible accessory
- Dimensions and selection, please call sales.
- DA360 : diffuser size 315/594 mm
DA360P : only false ceiling plate 594x594 mm for diffuser up to and including size 250 mm, diffuser to be ordered separately
- Plenum to be ordered separately

LCO



- Lattice Core Diffuser usually used as exhaust grille
- Mill finish aluminium grille in aluminium U-shaped frame both in RAL 9010
- Diffuser integrated in false ceiling plate 594 x 594 mm

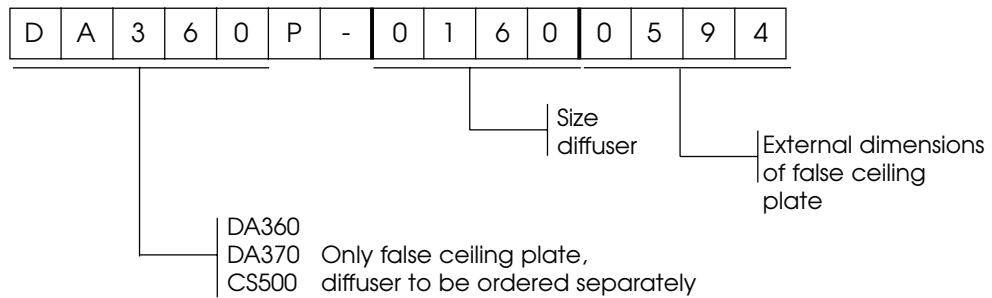
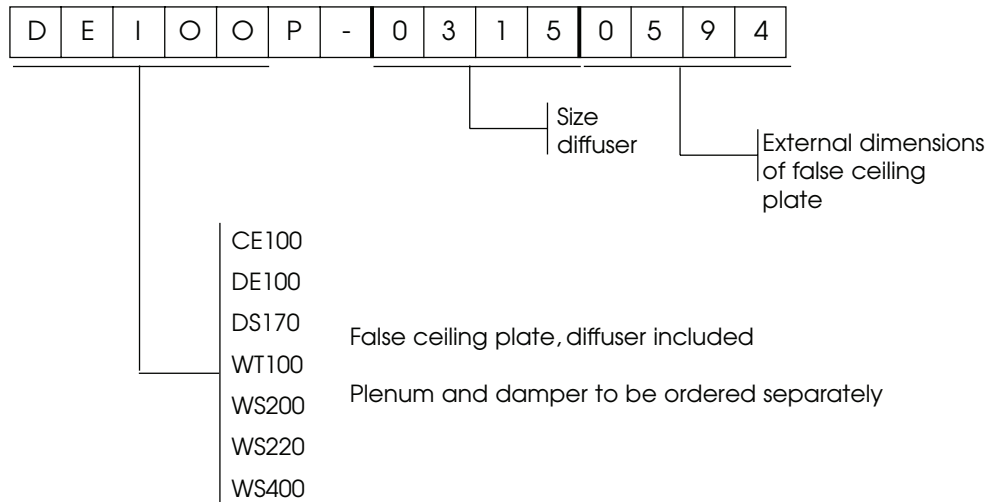
DS170 P



- Circular diffuser with fixed air pattern
- Damper as possible accessory
- Construction in steel, painted white (RAL9010)
- Dimensions and selection, please call sales.
- DS170P: diffuser up to and including size 315 mm with false ceiling plate 594x594 mm
- Plenum to be ordered separately

DIFFUSERS FOR FALSE CEILINGS

How to order



***REMARK:** All false ceiling plates are painted white (RAL9010)